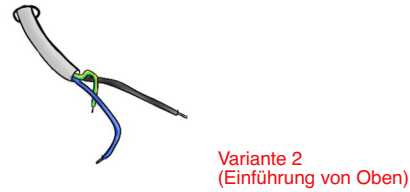
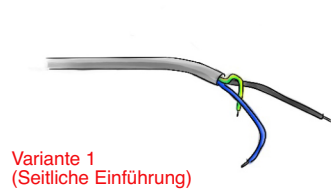


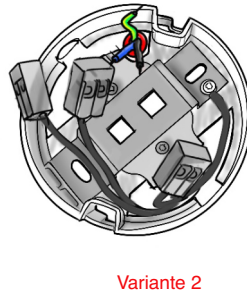
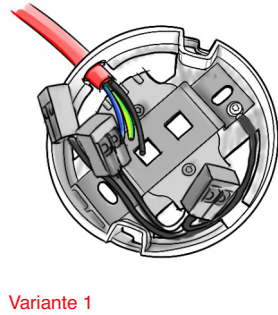
# Montageanleitung

PENDEO® Base 2 ow

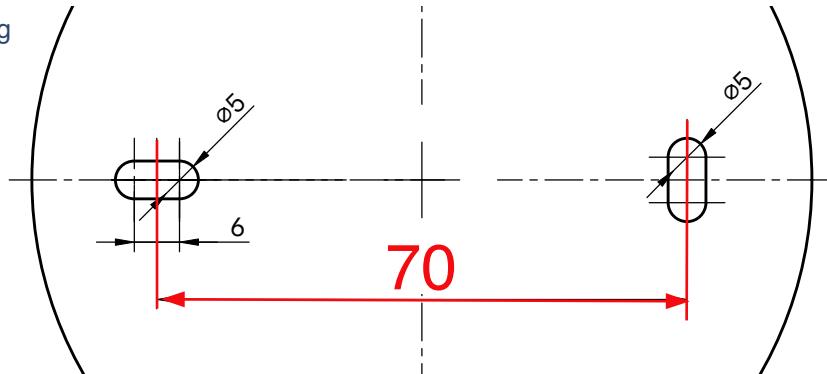
## 1 Vorbereitung



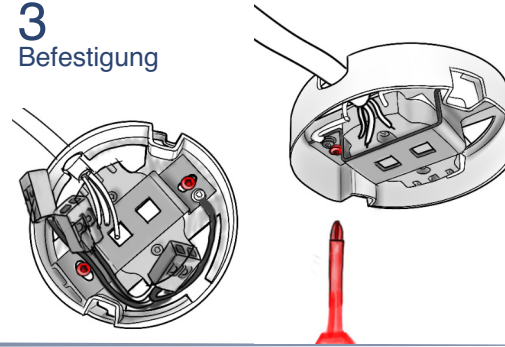
## 2 Kabeleinführung



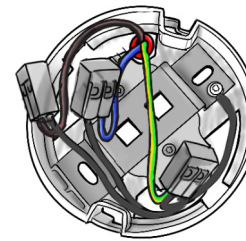
## 1:1 Zeichnung (Schablone)



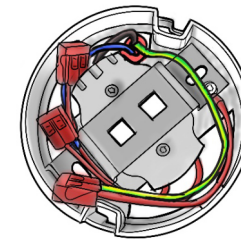
## 3 Befestigung



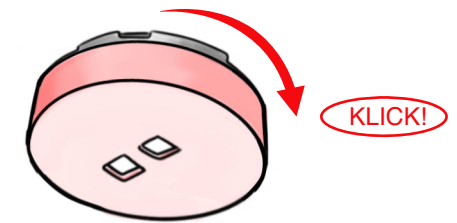
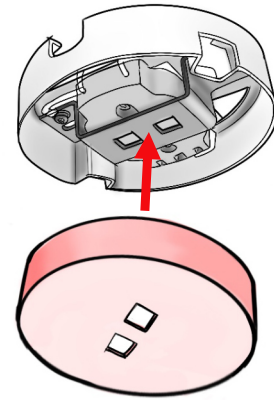
## 4 Adern anschliessen



## 5 Verstauen



## 6 Deckel schliessen



PENDEO®  
Base 2 ow



PENDEO® Base 2 ow

### Data sheet

Voltage	240VAC
Frequency	50Hz
Max Current	5A
Max Weight	2kg
Conform	DIN EN 61534-1

[www.pendeo.ch](http://www.pendeo.ch)

© 2026 itschner connect AG, Zürich CH

  
PENDEO